

Southeast Kansas Mental Health Center

304 North Jefferson Avenue, Iola, KS

■ ■ Our Community Mental Health Center ■ ■

Nathan Fawson
Executive Director

To make an appointment:
(620) 365-5717

Toll Free 1-866-973-2241
After Hours crisis 1-888-588-6774

Serving Allen, Anderson, Bourbon, Neosho, Linn & Woodson Counties
"Mental Health Matters"



celebrating


30

years

1987 - 2017

Community National Bank & Trust
Supports the Arts.

620-365-6000

Like us on 
120 E. Madison, Iola
www.mybankcnb.com

Hoffmeier Electric



402 N Cottonwood, PO Box 84, Iola, KS 66749
(620) 365-6622

The Hoffmeier Electric family supports the Iola Community Theatre
Gary & Sue Hoffmeier, Jeff Cook, Ruby Davis,
Cathy Howard & Jimbo Valentine

Best Wishes on a Fine Season

From the Staff at



Class Act Salon

Lauren Hufferd, Owner & Stylist

Pam Tressler
Stylist

Sabra Aguirre
Stylist

Danielle Ware
Stylist

Kate Trego
Esthetician

10 E. Jackson, Iola, KS (620) 365-7888

620-365-5500

J & J Contractors, Inc.

P.O. Box 646 - Iola, Kansas 66749



Bridges - Guard Rail - Concrete



1361 Maryland Rd
Iola, KS

Justin Hoepker
(620) 365-0606

"Mud Racing at it's Finest"



Terry R. Sparks

Agent

Ryan Sparks

Financial Services Representative

Providing Insurance and Financial Services

15 W. Madison, Iola, KS 66749
(620) 365-7311 • (800) 464-8781



Best Wishes From the Staff of

IOLA PHARMACY, INC.

Now Available at Two Iola Locations
109 East Madison • (620) 365-3176
1408 East Street • (620) 365-6848
Mon. thru Fri. 9:00 - 7:00 • Sat. 9:00-5:00



Kudos for a Great Season Lineup!
- Duane & Judy McGraw

Duane's Flowers

5 South Jefferson, Iola, Kansas
(620) 365-5723 • (800) 279-9237
www.duanesflowers.com

VISION SOURCE™

Dr. Douglas Donnelly

Dr. Matthew Skahan

216 N. Jefferson, P.O. Box 847, Iola, KS 66749
(620) 365-2108



PSI

Personal Service Insurance, Inc.
Personal Service Realty
Homeowners • Farmowners • Life
Commercial • Auto • Crop Insurance



Loren Korte • Gari Korte

Yates Center : (620) 365-6908
Moran: (620) 237-4631

Humboldt: (620) 473-3831
Iola: (620) 365-6908



Look who's in the

Spotlight



Best Wishes from Kenneth & Phyllis Nelson

DOUG STRICKLER FARMS

1380 1300TH ST • IOLA, KS 66749



**Best Wishes
for a Great Season**

Allen County Realty, Inc.

John F. Brocker, President

Office Phone: 620-365-3178

513 North State

Cell: 620-365-1672

P.O. Box 513

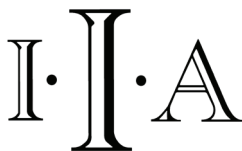
Fax: 620-365-3179

Iola, Ks 66749

Email: john@acri.kscoxmail.com



Iola Insurance Associates



203 South Chestnut
P.O. Box 653
Iola, Kansas 66749
(620) 365-7601



DEBORAH A. TAICLET • MICHELLE M. BIGELOW

Appliance **Flynn** & Hi Def Center, LLC



Sales and Service

11 N. Jefferson, Iola, KS 66749

Phone 620-365-2538 • Toll Free 888-702-9390 • Fax 888-702-3791

flynn@flynnappliance.com

Monday-Thursday: 8-5 • Friday: 8-4 • Saturday 8-1

AROUND THE



CORNER

COFFEE ♦ EATERY

Monday through Friday
6:30 AM to 4:00 PM

Saturdays
8:00 AM to 2:00 PM

110 S. Jefferson, Iola, KS 66749
(620) 380-6595

Like Us on Facebook!

The Studio

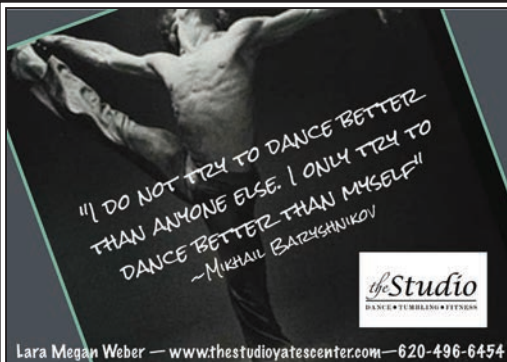
Lara Megan Weber

Opening Number Dance Company

Xplosion All Stars Cheerleading

103 W Mary Street

Yates Center, Kansas 66783



"I DO NOT TRY TO DANCE BETTER
THAN ANYONE ELSE. I ONLY TRY TO
DANCE BETTER THAN MYSELF"
~ MIKHAIL BARYSHNIKOV



Lara Megan Weber — www.thestudioyatescenter.com — 620-496-6454

sonic

equipment, co.

900 West Miller Road, Iola, KS 66749
(800) 365-5701

Decorator Supply Inc

Your One Stop Decorating Store
California Paints

Angela Wray

Owner/President

decr8rsupply@ymail.com

Phone: 620-365-5211

Fax: 620-365-6704

102 N Washington

Iola, Ks 66749

NW Corner of Downtown
Square

See Us For
Carpet, Ceramic
Tile, Hardwood,
Laminates, Vinyl
Tile, Vinyl Flooring,
Cabinets &
Countertops, Custom
Window Treatments,
Custom Drapery and
Bedspreads

MODEL T HAVEN, INC.

Mark Freimiller

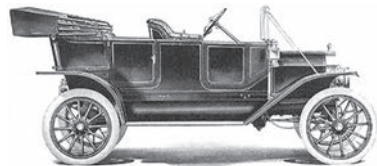
2033 Nebraska Road

Iola, Kansas 66749

Phone (620) 365-6709

Fax (620) 365-8154

modelthaveninc@gmail.com



www.ModelTHaven.com

Offering a full line of used and reproduction parts!



JIM TALKINGTON, AGENT

20 N. WASHINGTON

IOLA, KS 66749-2836

BUS: (620)365-2042

FAX: (620) 365-8066

jtalkington@shelterinsurance.com

www.shelterinsurance.com/jamestalkington



DANCE
AUTHORITY



Autographs

